

## MATERIAL SAFETY DATA SHEET

# Myriad

### SECTION 1: PRODUCT IDENTIFICATION

**Product name:** Matrine 0.5% SL

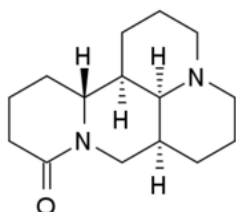
**Chemical name:** (5beta)-matridin-15-one

**Mol. Wt.:** 248.36

**M.F.:** C<sub>15</sub>H<sub>24</sub>N<sub>2</sub>O

**CAS No.:** 519-02-8

**Structural:**



### SECTION 2: COMPOSITION AND INGREDIENT INFORMATION

Matrine

0.5% w/v

### SECTION 3: HEALTH HAZARD INFORMATION

Harmful if swallowed. Do not get in eyes, on skin, or on clothing.

## SECTION 4: FIRST AID MEASURES

**Inhalation:** Remove victim to fresh air and keep at rest in a position comfortable for breathing. Get medical advice/attention if you feel unwell.

**Skin contact:** Remove/Take off immediately all contaminated clothing. Rinse skin with water/shower. If skin irritation or rash occurs: Get medical advice/attention.

**Eye contact:** Rinse cautiously with water for several minutes. Remove contact lenses, if present and easy to do. Continue rinsing. If eye irritation persists: Get medical advice/attention.

**Ingestion:** Get medical advice/attention if you feel unwell. Rinse mouth.

## SECTION 5: FIRE AND EXPLOSION INFORMATION

**Suitable extinguishing media:** Dry chemical, foam, water spray, carbon dioxide.

**Specific hazards:** Take care as it may decompose upon combustion or in high temperatures to generate poisonous fume.

**Specific methods:** Fire-extinguishing work is done from the windward and the suitable fire-extinguishing method according to the surrounding situation is used. Uninvolved persons should evacuate to a safe place. In case of fire in the surroundings: Remove movable containers if safe to do so.

**Special protective equipment for firefighters:** When extinguishing fire, be sure to wear personal protective equipment.

## SECTION 6: ACCIDENTAL RELEASE MEASURES

**Personal precautions, protective equipment and emergency procedures:** Use personal protective equipment. Keep people away from and upwind of spill/leak. Entry to non-involved personnel should be controlled around the leakage area by roping off, etc.

**Environmental precautions:** Prevent product from entering drains.

**Methods and materials for containment and cleaning up:** Sweep dust to collect it into an airtight container, taking care not to disperse it. Adhered or collected material should be promptly disposed of, in accordance with appropriate laws and regulations.

## SECTION 7: HANDLING AND STORAGE

**Handling:** Handling is performed in a well ventilated place. Wear suitable protective equipment. Prevent dispersion of dust. Wash hands and face thoroughly after handling. Use a local exhaust if dust or aerosol will be generated. Avoid contact with skin, eyes and clothing.

**Storage:** Keep container tightly closed. Store in a refrigerator. Store away from incompatible materials such as oxidizing agents.

## SECTION 8: EXPOSURE CONTROLS / PERSONAL PROTECTION

**Engineering controls:** Install a closed system or local exhaust as possible so that workers should not be exposed directly. Also install safety shower and eye bath.

### **Personal protective equipment**

Respiratory protection: Dust respirator. Follow local and national regulations.

Hand protection: Protective gloves.

Eye protection: Safety glasses. A face-shield, if the situation requires.

Skin and body protection: Protective clothing. Protective boots, if the situation requires.

## **SECTION 9: PHYSICAL AND CHEMICAL PROPERTIES**

**Appearance:** Dark brown liquid

**Odor:** Characteristic Odor

**pH:** 4.0-7.0

## **SECTION 10: STABILITY AND REACTIVITY INFORMATION**

**Stability:** Stable under proper conditions.

**Reactivity:** No special reactivity has been reported.

**Conditions to avoid:** Heat-sensitive

**Incompatible materials:** Oxidizing agents

**Hazardous decomposition products:** Carbon monoxide, Carbon dioxide, Nitrogen oxides (NO<sub>x</sub>)

## **SECTION 11: TOXICOLOGICAL INFORMATION**

**Oral:** Acute oral LD<sub>50</sub> for female rats >5000 mg/kg.

**Dermal:** Acute dermal LD<sub>50</sub> for rats >2000 mg/kg.

**Inhalation:** LC<sub>50</sub> (4 h) for rats >2.0 mg/l.

**Irritation:** None irritating to skin and eyes (rabbit)

## **SECTION 12: ECOLOGICAL INFORMATION**

### For Matrine TK

**Fish:** LC<sub>50</sub> of Matrine to rainbow trout at 96h is >200.0mg/L, to golden orfe is >200.0mg/L, so Matrine d to fish belong to the Low toxicity.

**Birds:** LD<sub>50</sub> of Matrine to bobwhite quail at 5 d is >5000 mg/kg, to mallard ducks is >5000 mg/kg

**Bees:** LD<sub>50</sub> (48 h) >100 µg/bee

## SECTION 13: DISPOSAL CONSIDERATIONS

Recycle to process, if possible. Consult your local regional authorities. You may be able to dissolve or mix material with a combustible solvent and burn in a chemical incinerator equipped with an afterburner and scrubber system.

Observe all federal, state and local regulations when disposing of the substance.

## SECTION 14: TRANSPORT INFORMATION

Not available

## SECTION 15: REGULATORY INFORMATION

Not available

## SECTION 16: OTHER INFORMATION

Buyer assumes all responsibility for safety and use not in accordance with the product label instructions. This MSDS summarizes our best knowledge of the health and safety hazard information of the product and how to safely handle and use the product in the workplace. It should be read taking into account how the product is handled in your particular situation and how it is used in conjunction with other products.

Do not spray near open flame. Wash hands before eating, drinking, chewing gum, smoking, or using the toilet. Remove clothing immediately if the herbicide gets inside. Then wash skin thoroughly using a non-abrasive soap and put on clean clothing. Do not apply directly

to areas where surface water is present, or to intertidal areas below the mean high water mark. Water used to clean equipment must be disposed of correctly to avoid contamination.

**Storage:** To maintain the quality, store in covered warehouse at temperatures between 0o and 50°C. Keep containers tightly closed, in a well-ventilated place. Store away from food, drink, animal feeding stuffs and sources of ignition. Keep away from children and unauthorised adults. Adhere to local regulations.

## **SECTION 8: EXPOSURE CONTROLS / PERSONAL PROTECTION**

**Respirator:** An approved respirator suitable for protection from dusts and mists of pesticides is adequate. Limitations of respirator use specified by the approving agency and the manufacturer must be observed.

**Clothing:** Employee must wear appropriate protective (impervious) clothing and equipment to prevent repeated or prolonged skin contact with this substance.

MSDS Revised December, 2019

MSDS Modified December, 2020

### **Disclaimer**

The Content given here in, are as per the declaration given by the manufacturer and EABCL Claims zero Responsibility.