

Rider Pro 24.7 SC

AI : Thiamethoxam 141 g/L+ Lambdacylothrln 106 g/L

IRAC CODE: 4A + 3A

PCPB NO: 2353

WHO CLASS: II (Yellow - Moderately Hazardous)

Description

Is a broad-spectrum insecticide with contact and stomach action for the control of Aphids, Whiteflies and Caterpillars on Roses.

Mode of Action

Thiamethoxam belongs in the class group of neonicotinoids and the compound gets in the way of information transfer between nerve cells by interfering with nicotinic acetylcholine receptors in the central nervous system, and eventually paralyzes the muscles of the insects.

Lambda - cyhalothrin belongs to synthetic pyrethroid chemical group which kills insects by contact, ingestion and ovicidal action. It kills targeted insects via disrupting and compromising the insect's central nervous system.

Rate of Application

300ml/ha/in spray volume of 1000L of water; 6mL/20L of water
150ml/Ha/in spray volume of 1000L of water; 3mL/20 L of water

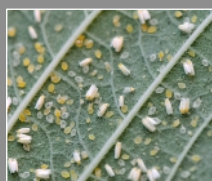
Available Pack Size

50ml, 100ml, 250ml, 500ml, 1L, 5L and 20L

Target Pests



Aphids



Whiteflies



Spidermites



FAW



Mealybugs



Caterpillars

Key Benefits

- >>> Cost friendly.
- >>> Broad spectrum.
- >>> Acts on all pest stages.
- >>> Prevents spread of leaf curl virus (by preventing the vectors - secondary prevention)

Method of Application

Half fill the spray tank with water. Add the required amount of **Rider Pro 24.7 SC** then fill the water to the required level and mix or agitate thoroughly to uniformity. Spray immediately after mixing.

